

**American Refrigeration
Cold Storage & Ice-Making 1875-1915**

**Refrigerating Adverts
Part-1**



FINNESEY & KOBLER
THE MODEL SHOP
Brown & 27th Sts.

CUSTOM BUILDERS
ABSOLUTELY
HIGH GRADE

& KOBLER

PENNSYLVANIA

**ICE
WAGONS
TRUCKS
COACHES
AMBULANCES**

FINNESEY

PHILADELPHIA,

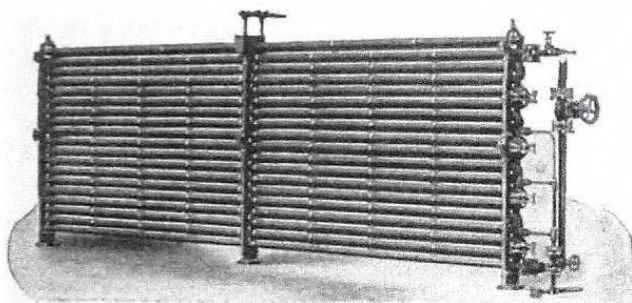
If a man can write a better book,
preach a better sermon or make a
better mouse-trap than his
neighbor, though he build
his house in the woods,
the world will make
a beaten path to
his door.—
Emerson

That unnecessary
correspondence may
be avoided, kindly state
weight of ice you desire to
load. This is necessary that we
may intelligently quote price.



FINNESEY & KOBLER
THE MODEL SHOP
Brown & 27th Sts.

Mention COLD STORAGE AND ICE TRADE JOURNAL in writing to advertisers.



If you knew
how ample and efficient condensing surface affected the economy of a plant—you would ask us at once to determine how much coal YOU CAN SAVE by

using more of our Counter-Current Ammonia Condensers.

DE LA VERGNE MACHINE CO.

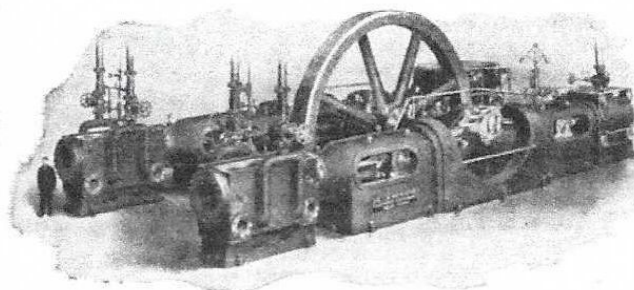
Foot East 138th St., New York

CHICAGO CINCINNATI
KANSAS CITY NEW ORLEANS

ICE MACHINES

5 to 600 Tons Capacity
Vertical and Horizontal Type
with Double Acting

SAFETY COMPRESSORS



J. S. DE HART, JR.,
PRESIDENT

A. F. WEHNER,
SECRETARY

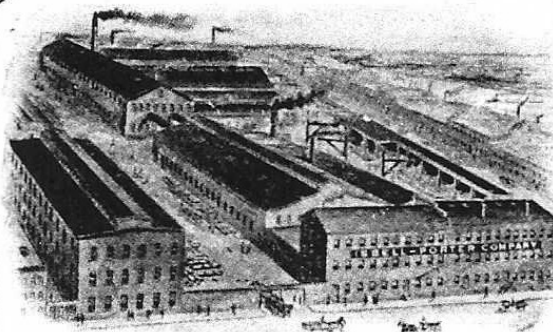
R. K. WEHNER,
TREASURER

ISBELL-PORTER COMPANY

ENGINEERS AND FOUNDERS

**POLAR
ABSORPTION
REFRIGERATING
MACHINES
DESIGNED TO USE
EXHAUST OR LIVE
STEAM
LOW TEMPERATURE
WORK A SPECIALTY**

**BRINE
COOLERS
PLATE
ICE PLANTS**



**MAIN OFFICE AND WORKS
BRIDGE & OGDEN STREETS
NEWARK, N. J.
ESTABLISHED 1865**

**DESIGNERS
AND
BUILDERS
OF ALL
APPARATUS
FOR
GAS WORKS
REFRIGERATING
AND
ICE MAKING
PLANTS
ETC.**

ANTONIO C. PESSANO
President and Gen'l Mgr

GEORGE H. RUSSEL
Vice-President

H. W. HOYT
Vice-President

JOHN R. RUSSEL
Secretary and Treasurer

GREAT LAKES ENGINEERING WORKS

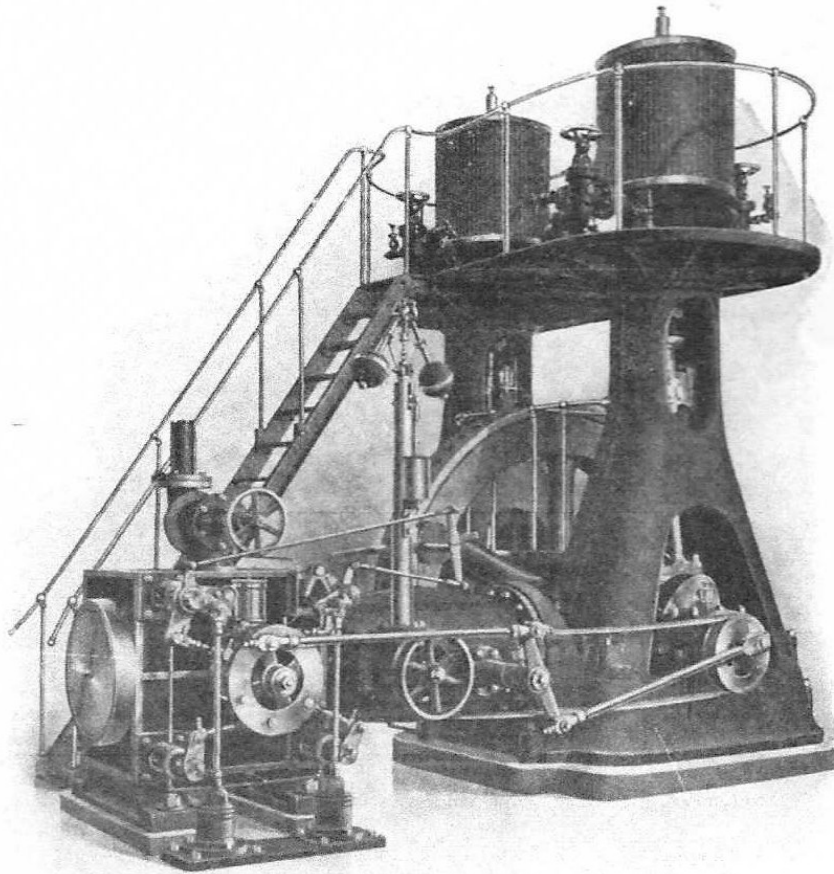
DETROIT, MICHIGAN

Western Office:
609 Postal Building
Kansas City, Missouri

Eastern Office:
Real Estate Trust Bldg.
Philadelphia . . . Penna.

MANUFACTURERS
OF HIGH GRADE

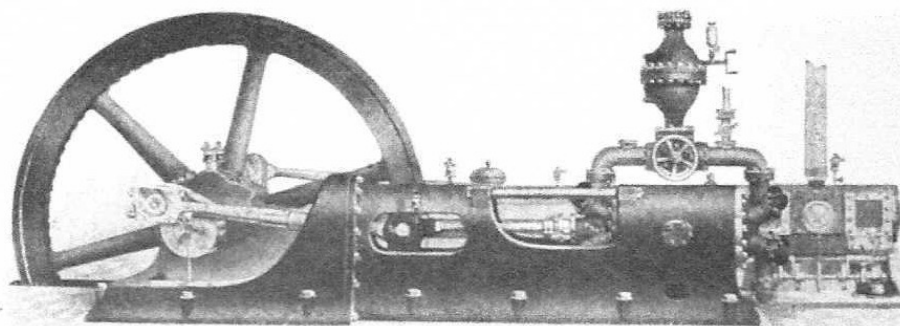
REFRIGERATING AND ICE MAKING MACHINERY



STANDARD "GREAT LAKES" MACHINE

Built in All Sizes

Write for Catalogue



A Trifling Increase in First Cost: An Enormous Saving in the Long Run

Would you permit an increased first cost of one dollar to stand in your way of saving ten dollars? Of course not.

American manufacturers each year cast in the discard thousands of dollars worth of well made machinery. Why? They have found something better, something of greater economy in daily cost of maintenance.

The above is exactly the Triumph proposition; Triumph Ice making and refrigerating machinery is sold for the lowest price possible for the best. When the machine is in operation, you save the dollars, and the profits begin to grow.

Write us to-day, we can interest you.



"True in the Long Run."

Bulletin 501-C.

THE TRIUMPH ICE MACHINE CO. CINCINNATI, OHIO

EASTERN OFFICES:

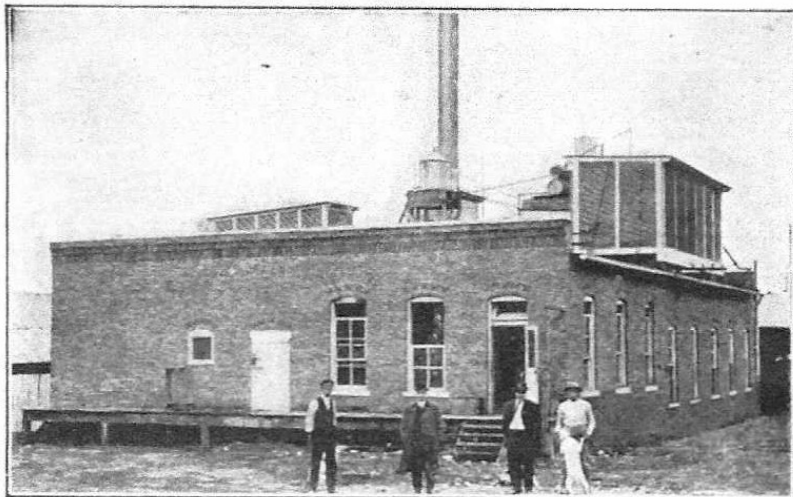
E. G. FENNELLY
1 Madison Avenue
New York City

PENNSYLVANIA ENGINEERING CO
Philadelphia
Pa

COL. T. H. BUTLER
Equitable Bldg
Baltimore, Md.

CHAS. COTTON
103 High Street
Boston, Mass.

MONEY MAKING MACHINERY

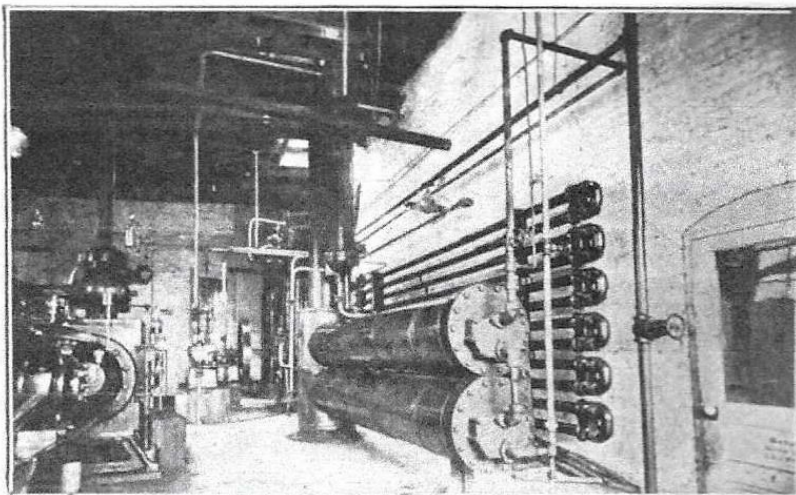


Plant of Lewisburg Light & Power Co., Lewisburg, Tenn.

Combine with your
Electric Machinery a
Vogt Absorption
Ice Making Machine
and
Use your Exhaust
Steam.

This is one of
a Lot of Combined
Plants.

Every One Making
Money since
adding Absorption
Machine.




The Vogt Machine takes Little Room.

Our Latest: Horizontal Tubular Brine Coolers and Condensers

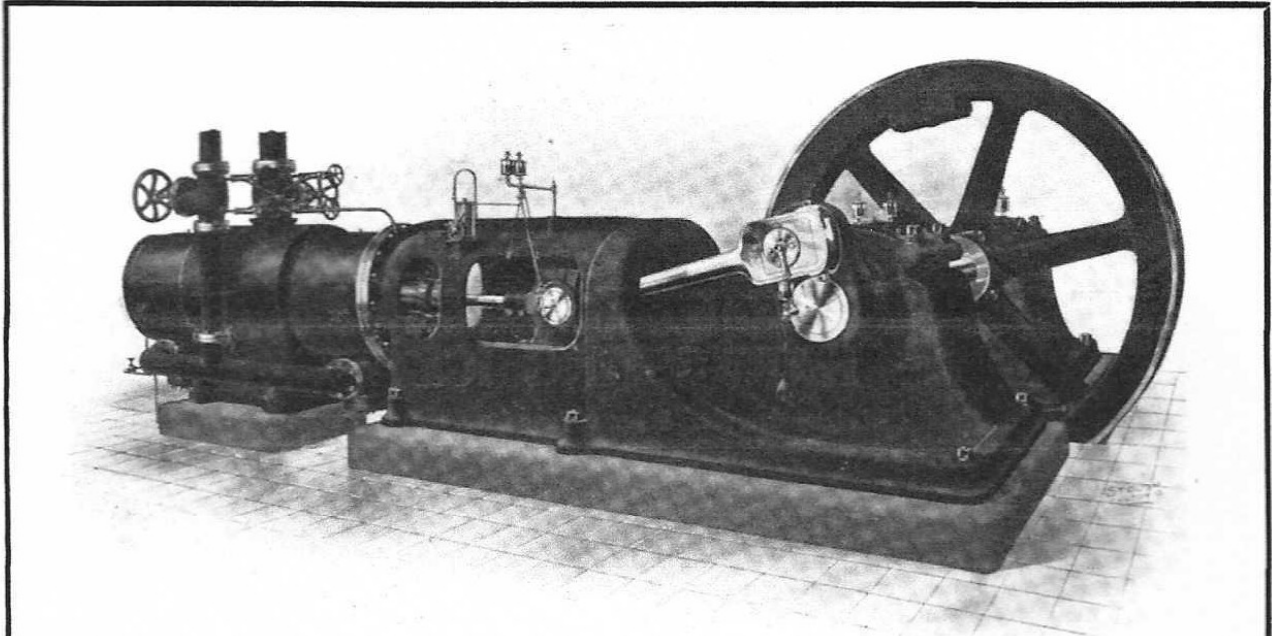
HENRY VOGT MACHINE CO.

(INCORPORATED)

Louisville, Ky., U. S. A.

 Vogt Water Tube Boilers
will make an Ideal Plant.

Write for Catalogues



The Arctic Horizontal Ammonia Compressor

The Most Modern and Most Economical Compressor in the World

Will handle more gas for a given cylinder volume than any other

Because

It is provided with **mechanically operated** suction valves which insure cylinder filling with gas at exactly the same pressure as that in suction main.

Handles gas at practically the same density as that in the suction main

Because

Owing to general construction and to the scientific method of jacketing compressor, the gas is not heated and rarified in entering the cylinder.

Is the safest machine ever built

Because

There are no valves opening into compressor. Also the discharge valves are so arranged that the compressor will handle large quantities of liquid if occasion demands, without the least strain or damage.

The above features are not found in any other type of compressor. They represent a **saving in power** as well as in cost of maintenance. Many other important features. Read catalog 21-A. Free for the asking.

THE ARCTIC ICE MACHINE CO. CANTON, OHIO

SALES OFFICES AT

CANTON, OHIO
Main Office

KANSAS CITY, MO.
708 Victor Building

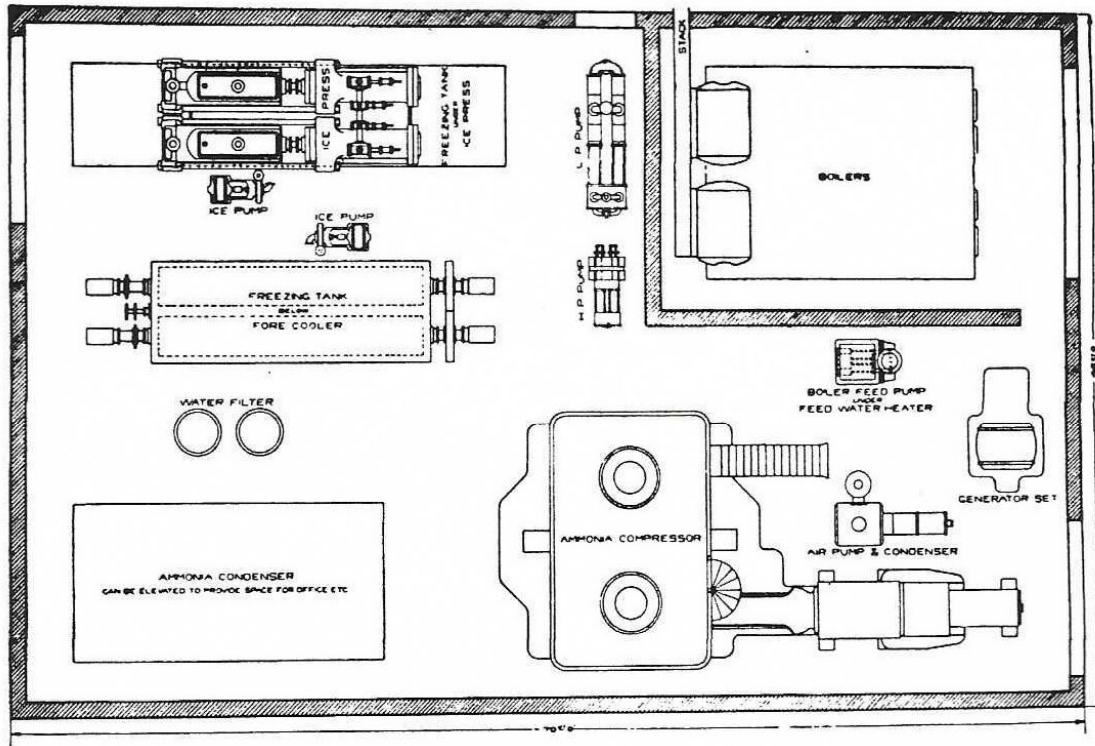
PITTSBURGH, PA.
1101 Diamond Bank Bldg.

NEW YORK CITY
994 Tinton Avenue

Federal Regulation System of Ice Manufacture

The Greatest Efficiency in the Smallest Space

- AREA** —One-Sixth to One-Ninth of any other system.
- ELASTICITY**—Shut down at any time WITHOUT LOSS OF ICE IN SYSTEM, and produce a perfect cake within One Hour after starting up.
- ECONOMY** —No losses through distillation, leaky cans or replacing warm plates or cans in bath. No plates or cans used.
- QUALITY** —Clear, fairly transparent, bluish tint, absolutely pure, no odor, does not rot nor disintegrate, dense, no arbitrary lines of cleavage.
- TIME** —Less than Two Minutes to produce a 250-pound block of ice with our 100 ton per day capacity plant.
- COST** —From 40% to 60% less than any other system.



LAY-OUT OF 100-TON PLANT SHOWING ECONOMY OF SPACE

For further information address

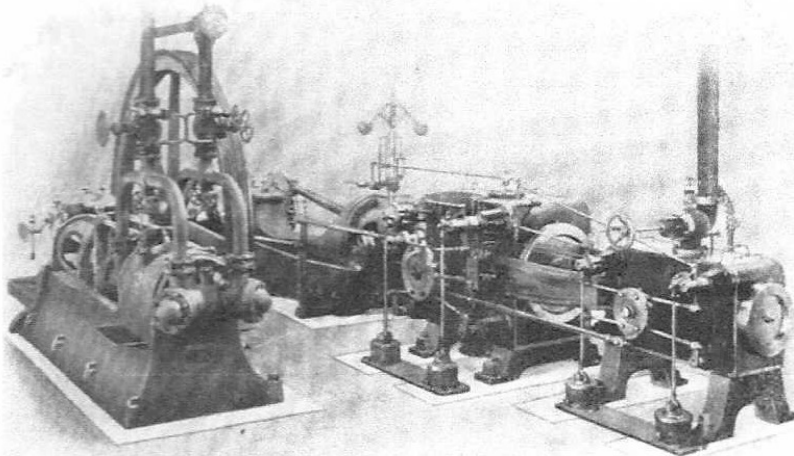
FEDERAL ICE MACHINE COMPANY

39 Wall Street, New York City. U. S. A.

VILTER-AMMONIA COMPRESSORS CORLISS ENGINES CONDENSERS VALVES AND FITTINGS APPLIANCES - ALL

Go to make up the complete Vilter ice or refrigerating plant. And this means that there is a perfect dovetailing of everything—a smooth, even operation that is a delight to the owner of a Vilter plant.

But that is not all. Every new wrinkle is investigated thoroughly by us and if it's practical you'll find it in the Vilter plant—perfected in every detail. Just investigate our Gravity Feed System, or, as it is more popularly known, the Flooded System. That is just one wrinkle we have developed to its present highly perfected state.



**Our Nearest Branch Office
Will Gladly Help You With
Your Problems.**

The Vilter Mfg. Co.

**836 Clinton Street
MILWAUKEE, WIS.**

CHICAGO 1532 Monadnock Bldg.	ST. LOUIS 3614 Arsenal St.
LOS ANGELES 514 I. W. Helmann Bldg.	OMAHA Hotel Rome
PHILADELPHIA 8th and Spring Garden Sts.	PITTSBURG 314 Curry Bldg.
NEW YORK 604 Transit Bldg., 7 E. 42d St.	HOUSTON 820 Travis St.

Why do you suppose that ice machine makers as far east as the Atlantic Coast and West as the Rocky Mountains buy

SEMI-STEEL TEST CASTINGS

from us? They do and some of them have foundries of their own.

''There's a Reason''

THE FRANCIS & NYGREN FOUNDRY CO
2524-2546 FILLMORE STREET, CHICAGO, ILL

EVERY USER OF REFRIGERATING MACHINERY

Should be Interested in the INSURANCE PLANS of the

Exchange Mutual Fire Insurance Company

Exchange Building, 327 Walnut Street, Philadelphia, Pa.

ITS OBJECTS ARE TO

Furnish insurance at reduced rates—Prepare forms to extend the greatest measure of protection—Secure revised lower ratings by Tariff Associations of Stock Companies—Represent its members in all insurance matters—Adjust losses, make appraisals, give insurance advice.

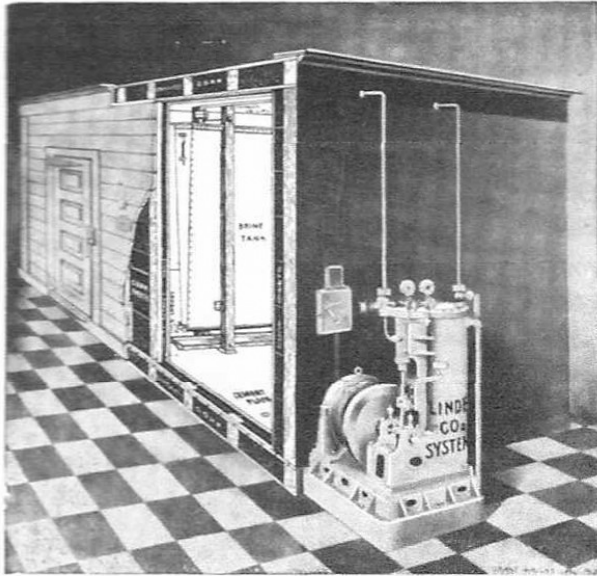
We are carrying insurance for and we are also Members of

INDIANA ICE MFRS. ASSN.	MIDDLE STATES ICE PRODUCERS EXCHANGE	SOUTHERN ICE EXCHANGE
SOUTH-WESTERN ICE MFRS. ASSN.	WESTERN ICE MFRS. ASSN.	

Write for Information

Mention COLD STORAGE AND ICE TRADE JOURNAL in writing to advertisers.

LINDE CO₂ SYSTEM



SILENT RUNNING: Motor or Steam Engine
Direct Coupled; No Gearing.

NO LEAKAGE: Metallic Packing; No Cup
Leathers, and Oil Pump.

STORAGE OF COLD: Enclosed Brine Coolers;
No Pumping.

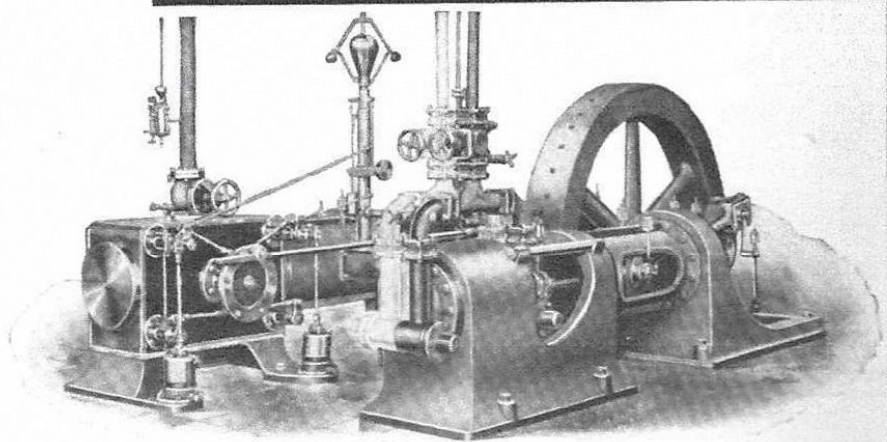
POSITIVELY SANITARY: Cork Insulation;
Cement Finish; Rounded Corners; No Smell.

HOT CLIMATES: Results Guaranteed in the
Tropics.

**Over 7,000 Machines at Work
on the Linde Systems, Car-
bonic Acid and Ammonia.**

**AMERICAN LINDE REFRIGERATION COMPANY
NEW YORK CITY**

General
Appearance of
Compressor and
Corliss Engine



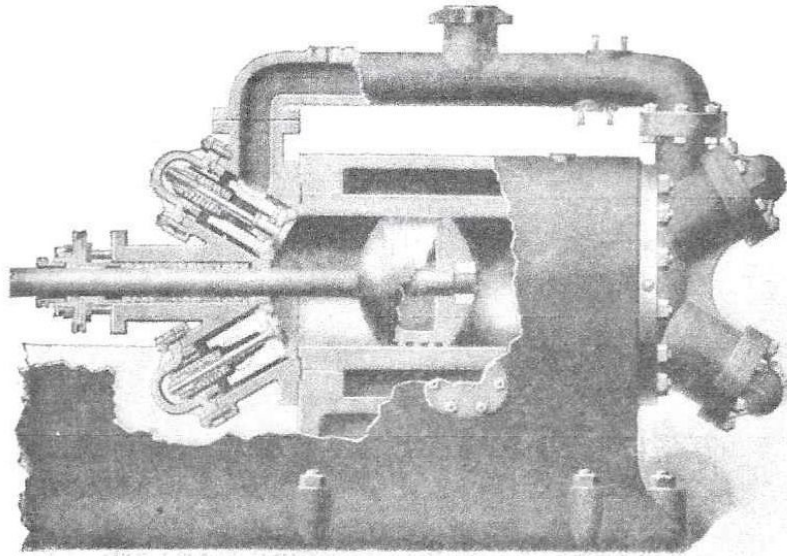
ALL ELSE
BEING
EQUAL,

The element of safety
in our compressors
should appeal to the

man or company about to install a plant. But we won't admit that the other machines (*some of them claiming safety features*) equal ours. We firmly believe that we have developed the most economical refrigerating machine on the market to-day. Couple this with the precautions we have taken for safety's sake and we believe a Huetteman & Cramer plant is unexcelled. Let us have particulars about your requirements and we'll send you figures by return mail.

Eastern Sales Manager
WILLIAM B. AFFLECK
719 NOBLE ST., PHILADELPHIA, PA.

HUETTEMAN & CRAMER
DETROIT, MICHIGAN



The Triumph Compressor

A Triumph Ice Machine

Is the result of a constant, honest effort to build a perfect ice machine.

The piston is a single piece of semi steel, cored out to reduce the weight.

The piston, also the cylinder heads and valves are so constructed as to eliminate all gas pockets; considering the loss of efficiency, due to re-expanded gas, this advantage should be remembered.

The Triumph safety suction and discharge valves are of ample area to effectively prevent wire drawing. Every stroke of the piston produces the utmost efficiency in actual service.

Bulletin 507-C.

**THE TRIUMPH ICE MACHINE CO.
CINCINNATI, OHIO**

Our Northeastern Agencies:

THE ENGINEERING & REFRIGERATING CO.

Sales Agents for
Triumph Refrigerating and Ice Making Machinery
90 West St.
New York City

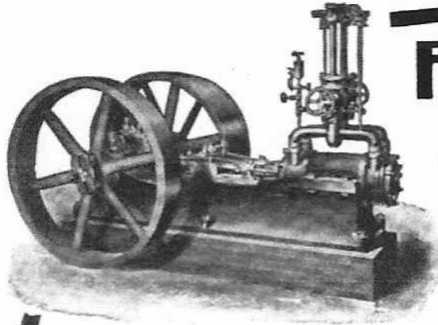
THE PENNSYLVANIA ENGINEERING CO.

Will give you the benefit of their expert advice and wide
experience in refrigerating engineering
1119 No. Howard Street
Philadelphia

CHAS. A. COTTON

Will furnish all data and complete information concerning your
requirements if you are located in Boston or vicinity

103 N. High Street
Boston, Mass.



FOR RESULTS USE **BARBER** REFRIGERATING MACHINERY

SIMPLICITY, EFFICIENCY, ECONOMY AND RELIABILITY are the cardinal features of the **Improved Barber Machines**. Over 1000 machines in successful operation. We build machines for every purpose—for reliable refrigeration or economical ice making. From three to 250 tons daily capacity. Can be driven by any kind of power. Every equipment backed by an iron-clad guarantee. Estimates free. We solicit correspondence regarding complete plants, repairs or alterations. Address:

Creamery Package Mfg. Co.

REFRIGERATING MACHINE DEPT

182-188 E. Kinzie St.

CHICAGO, ILL.

FACTORY
AT
DEKALB — ILL



Building, Insulation Piping and Refrigerating Plant Complete



DESIGNED BY

Starr Engineering Co.

JOHN E. STARR, President KARL WEGEMANN, Treasurer

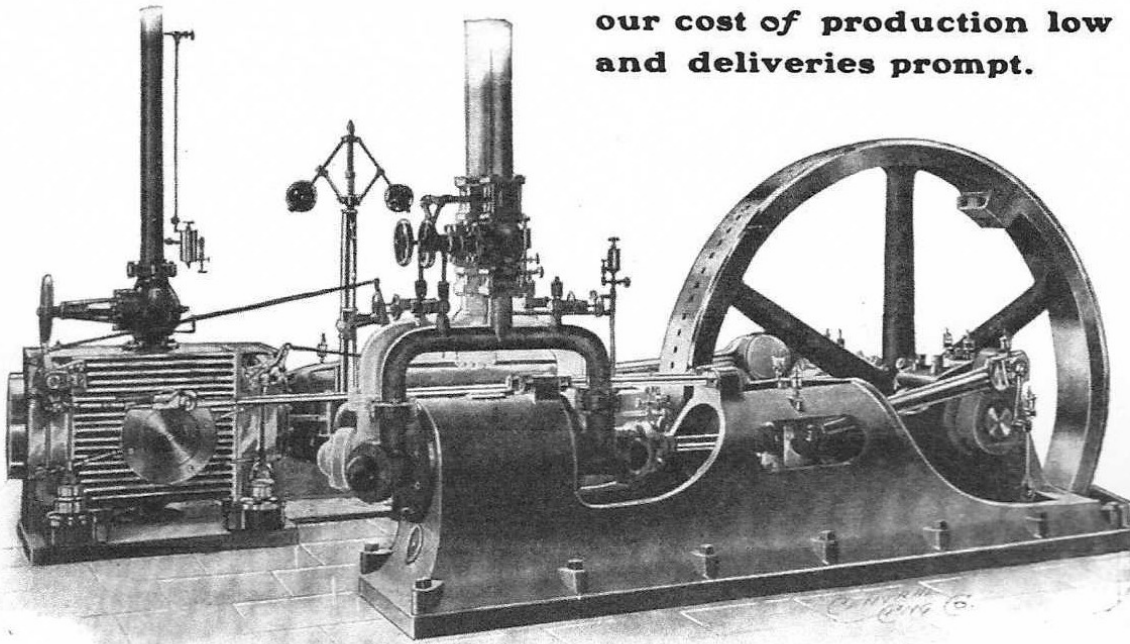
Consulting and Supervising
Engineers and Architects

48 CHURCH STREET

NEW YORK CITY

THE CLEVELAND makes good

Designed by engineers with experience and push. New patterns. Compressor has all features necessary to make it a machine successful technically and commercially. Shops run on modern lines. Machines built in lots, hence our cost of production low and deliveries prompt.



Horizontal and Vertical Types. 1 to 250 Tons Capacity. Any Drive.

It is not our compressor alone which is efficient. Tanks, pumps, piping, everything that goes with it is planned with care and judgment to make your installation a profitable investment.

New plants furnished for any service. Old ammonia compression plants of any make improved. *Let us show you.*

THE CLEVELAND ICE MACHINE CO.

1615-25 Merwin Ave.

Cleveland, Ohio

FRICK COMPANY

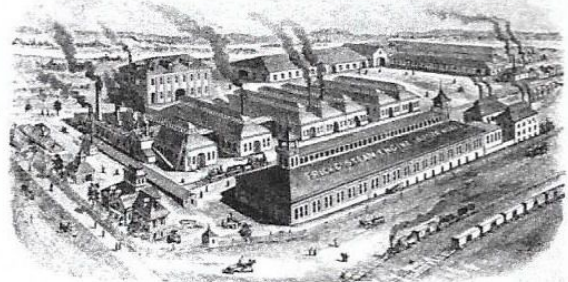
ENGINEERS.

WAYNESBORO, FRANKLIN COUNTY, PA., U. S. A.

INCORPORATED 1885.

JOSEPH PRICE, President.
SAMUEL HOELLICH, Vice-Pres.
H. B. STRICKLER, Treasurer.
EZRA FRICK, Secretary.
EDGAR PENNEY, M. E., Gen. Sup.

ESTABLISHED 1853.



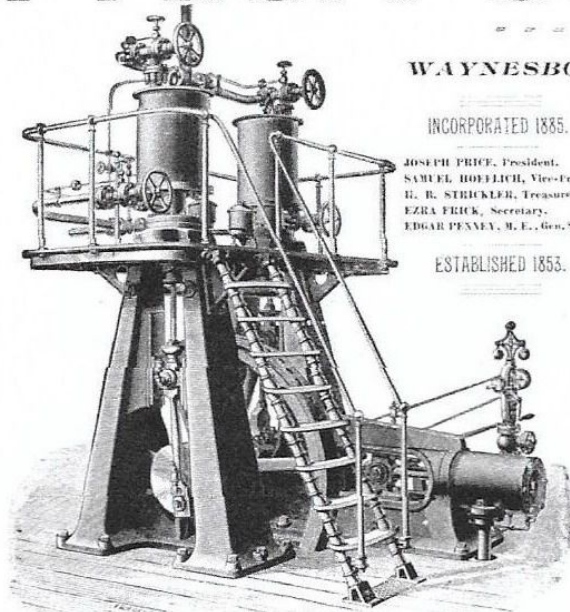
MAIN WORKS AND GENERAL OFFICES: WAYNESBORO, PA.

CAPITAL \$1,000,000.

MANUFACTURERS OF THE

ECLIPSE

Ice Making and Refrigerating Machines.



5-Ton Machine.

SEND FOR OUR NEW CATALOGUE, 1890.

A Few References:

BREWERIES. Refrigerating

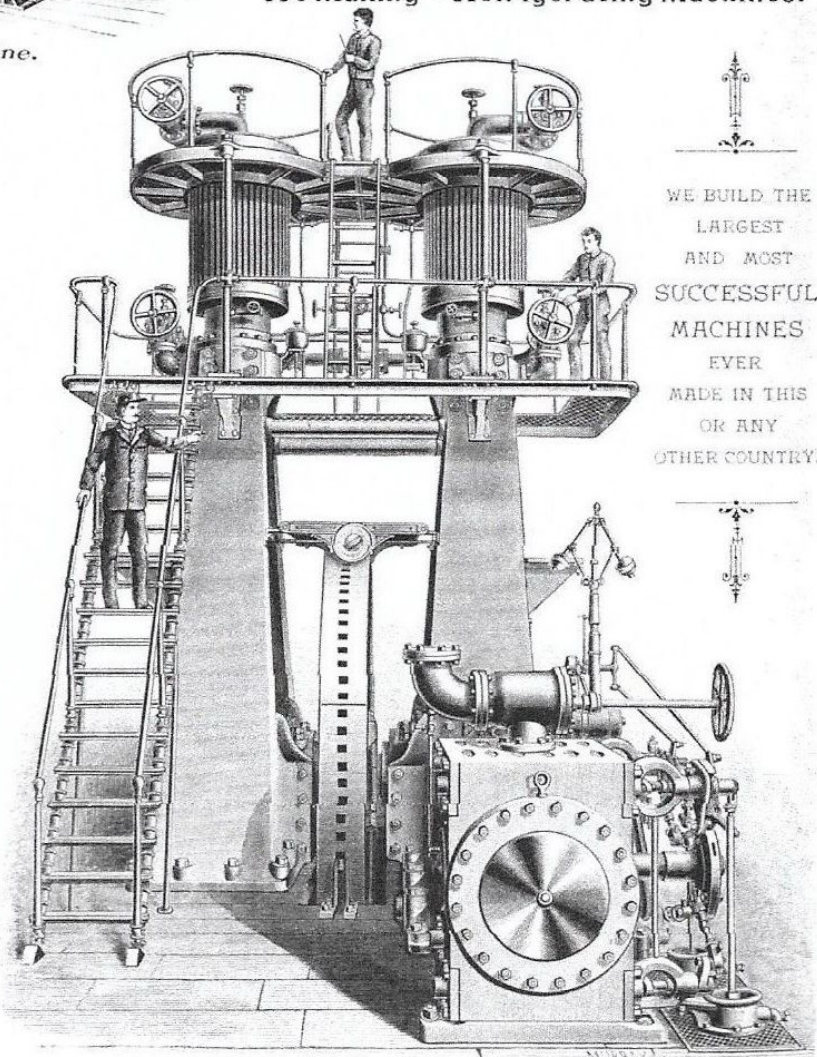
	Tons.
Phoenix Brg. Co., Baltimore, Md.	27
Gipps Brg. Co., Peoria, Ill.	30
Sprattler & Menell, Paterson, N. J.	32
Herman Lackman, Cincinnati	65
Henry Fink, Harrisburg, Pa.	32
Sebastian Helldorfer, Baltimore, Md.	32
Frank Reich & Bros., Springfield, Ill.	50
Jos. Stein & Co., Louisville, Ky.	23
Meyer & Reiblin, Covington, Ky.	32
Parkersburg Brg. Co., Parkersburg, W. Va.	27
Bellevue Brg. Co., Cincinnati, O.	50
Cumberland Brg. Co., Cumberland, Md.	27
D. Lutz & Son, Allegheny, Pa.	50
Herman Lackman, Cincinnati (2d order)	80

PACKING AND COLD STORAGE.

J. C. Shafer & Co., Baltimore	40
G. Cassard & Sons, Baltimore	25
Baltimore City Storage Co., Baltimore	32
Armour Packing Co., Kansas City	100
Shalleross & Son, Coatesville, Pa.	15
Washington Market Co., Washington, D. C.	32
Armour Packing Co., Kansas City (2d order)	150
Francis Whittaker & Sons, Wichita, Kas.	150
Emil Winters, Pittsburgh, Pa.	37
Frank Seifrid, Louisville, Ky.	7
Chicago Packing & Provision Co., Chicago	150
Chicago Packing & Provision Co., Chicago (second order)	150
Steelton Store Co., Steelton, Pa.	10
Pittsburgh Meat Supply Co., Allegheny, Pa.	50
J. Vogle & Son, Cincinnati	50
John C. Hatley, Chicago	65
G. H. Hammond & Co., Hammond, Ind.	150
G. H. Hammond & Co., Omaha, Neb.	150
Calumet Canning Co., Hammond, Ind.	32
West Chester Cold Stor. Co., W. Chester, Pa.	40
Chautauqua Lake Ice Co., Pittsburgh, Pa.	20

ICE FACTORIES.

	Tons.
F. L. Ellis & Co., Hopkinsville, Ky.	40
Con-Sumer Ice Co., New Orleans, La.	100
Little Rock Ice Co., Little Rock, Ark.	35
Owen-shoro Ice & Cold Stor. Co., O. shoro, Ky.	20
W. S. Norton, Jacksonville, Ill.	15
Pulaski Ice Co., Pulaski, Tenn.	5
Armour Packing Co., Kansas City	75
Ewing & Bell, Frontstown, Pa.	15
S. W. Hill, Allegheny, Pa.	38
Chautauqua Lake Ice Co., Pittsburgh	40
Chautauqua Lake Ice Co., Pittsburgh (2d order)	40
West Chester Ice Co., West Chester, Pa.	15
Steelton Store Co., Steelton, Pa.	10
Parkersburg Brg. Co., Parkersburg, W. Va.	3
Cumberland Brg. Co., Cumberland, Md.	8
Hagerstown Ice Co., Hagerstown, Md.	20
Alberto Malo, City of Mexico, Mex.	25
Germantown Ice Co., Germantown, Pa.	20
Bryn Mawr Hotel Co., Bryn Mawr, Pa.	20
Geo. S. Sexton & Co., Wytheville, Va.	5
Cambridge Ice Co., Cambridge, Md.	10



WE BUILD THE
LARGEST
AND MOST
SUCCESSFUL
MACHINES
EVER
MADE IN THIS
OR ANY
OTHER COUNTRY.

150-Ton Machine. Weight, 193,250 Pounds.

The Improved Pontifex-Wood Machine

A MOST ECONOMICAL AND RELIABLE APPARATUS.

Adapted to all classes of Refrigeration, especially where extremely low temperatures are required.

ALSO FOR

MAKING

... ICE

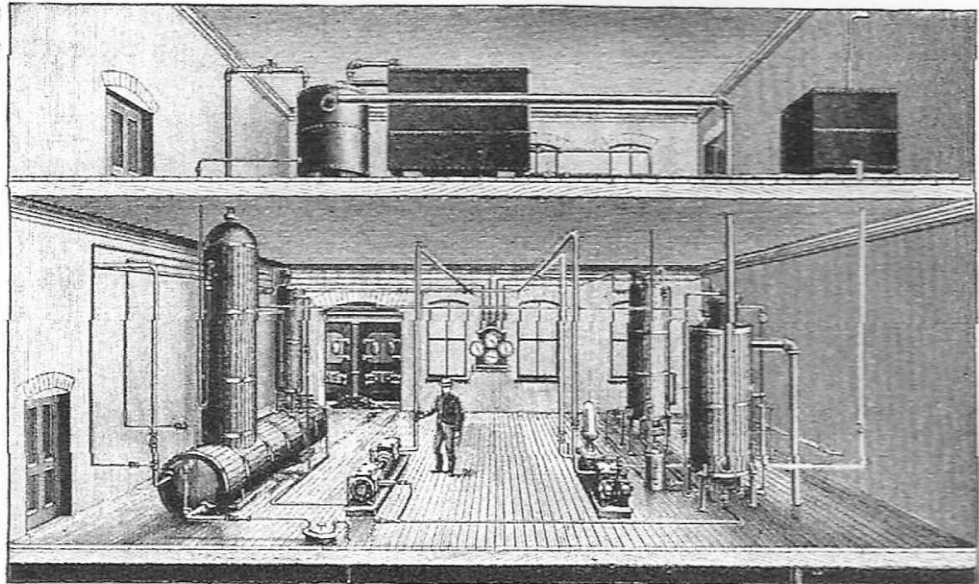
UPWARDS OF

400

MACHINES IN OPERATION.

H. J. W. S. COOKE,
Patentee.

ESTIMATES FURNISHED.
SEND FOR CIRCULARS.



ISBELL-PORTER COMPANY, BUILDERS,

OFFICES

245 BROADWAY, NEW YORK 46 BRIDGE STREET, NEWARK, N. J.

THE KRAUSCH IMPROVED STANDARD

THEO. KRAUSCH,
President.
JOHN KRAUSCH,
Secretary.

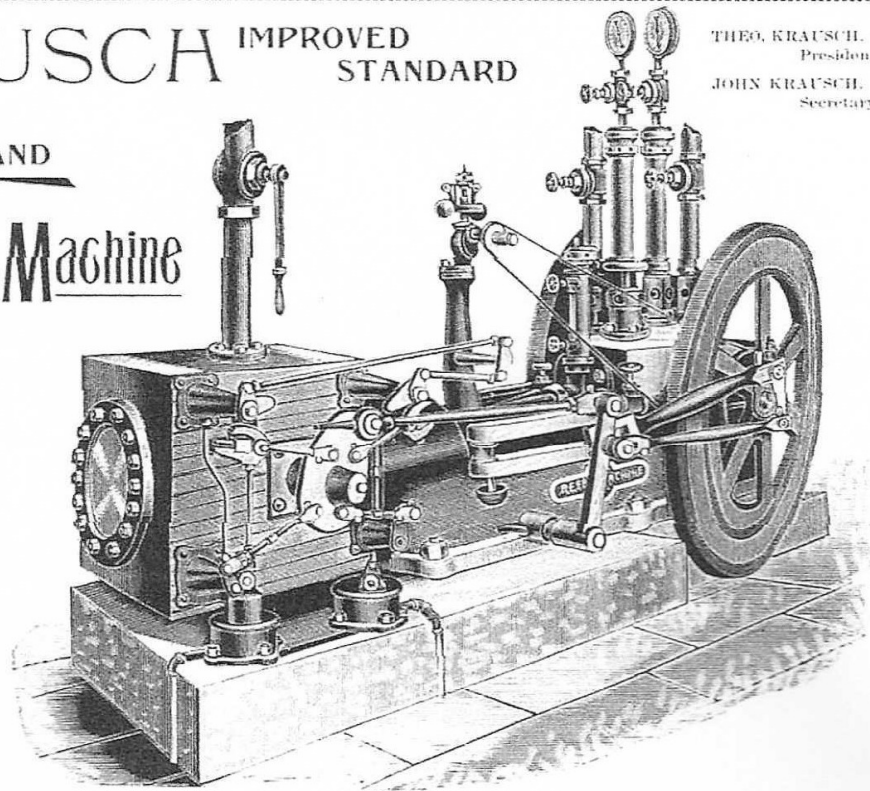
 **ICE AND**
Refrigeration Machine

Is original, horizontal, simple, strong, double acting, central, and is provided with the Corliss Valve Gear. It is most economical in fuel, water and space. Its refrigeration capacity is unsurpassed. Machines are in operation for 10 years without need of repairs, but ordinary wear and tear.

Our machines are guaranteed for years. Plants are erected for Packing Houses, Breweries, Oil Refineries, Cold Storage, Market Houses, Butcher Shops, Hotels and Ice Making.

PRICES ARE MODERATE.

ALL KINDS
ARCHITECTURAL PLANS
FURNISHED.



THE THEO. KRAUSCH CO.

122 E. UTICA STREET, BUFFALO, NEW YORK.